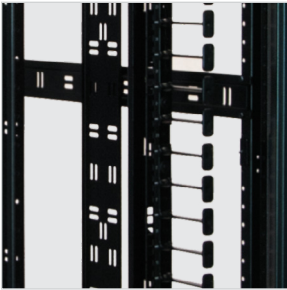


CUSTOM STACK INTEGRATION

STACK custom integration services from Great Lakes create a streamlined deployment process that reduces freight costs and creates the ultimate savings, time. Each cabinet will arrive configured to the customer's exact specification so that it's ready for immediate use—no hassle adjusting rail depth or installing countless cage nuts. Utilizing STACK services mean that we'll take care of the small details, no matter how precise.



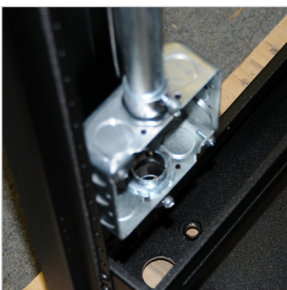
GREAT LAKES ACCESSORIES

- Purchased Great Lakes accessories are integrated at no additional cost
- Accessories which cannot be installed prior to shipping are packaged inside the cabinets for easy access
- Standard product integrated with standard accessories ships within 24-48 hours ARO



THIRD-PARTY PRODUCT

- Configure cabinets with third-party product including patch panels, UPS's, etc.
- Customers can order product and have it drop shipped to Great Lakes for future orders
- When requested, Great Lakes can source product and have it delivered directly to the warehouse



ELECTRICAL COMPONENTS

- Custom wiring and conduit installation for line voltage and/or data wires
- Wiring of various types of receptacles, plugs and devices
- Wiring for intake and exhaust fans and other airflow accessories



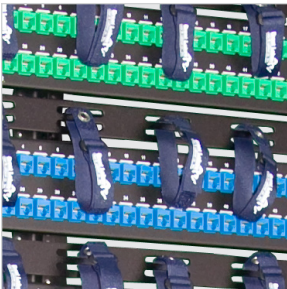
POWER SOLUTIONS

- Great Lakes partners with major PDU manufacturers to provide a comprehensive selection of PDUs
- PDUs can be drop shipped to Great Lakes and integrated prior to shipping
- Integrate monitoring sensors, expansion bays, and other devices that function with the PDU



INTELLIGENT ACCESS

- Upgrade doors with electromechanical handles that provide increased security measures.
- Handles and associated components (nodes, door sensors, etc.) integrated at Great Lakes ensure consistency and reliability
- Integrate cabinets with additional security-focused components from Great Lakes; to learn more, visit SEALcabinets.com



INVENTORY

- Configured cabinets that become the standard for large projects and future orders can become part of standing inventory
- Cabinets are preconfigured and available on the warehouse floor for immediate shipment
- Customer-specific part numbers are assigned to configured cabinets for easy ordering