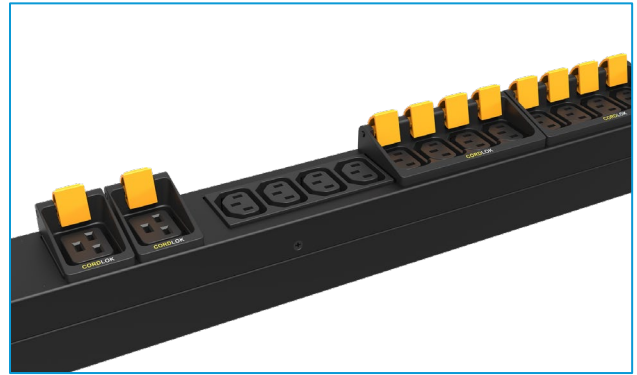


BUILD YOUR OWN

Request for Quote

Build Models are assembled to order. Certain combinations may require a minimum order quantity. Complete the form and receive a specification and quote within the hour. Send form to your GL sales rep or Orders@GreatCabinets.com

10,000+
BUILD YOUR OWN OPTIONS



Name _____

Email _____

Intelligence

Check all that apply

- Basic
- Remote monitoring
- Remote monitoring & touch screen
- Temp/humidity sensors (Sept., 2021)
- Switched ready PDU (Sept., 2021)

Input Voltage Choose one

- 120V (Q2 2021)
- 208V 1 PH
- 120/208V 3PH
- 208/240V 3PH
- 240/415V 3PH

Input Amperage Choose one

- 20
 - 30
 - 50* (Q4 2020)
 - 60* (Q4 2020)
- * Must choose 41" or larger unit length

Receptacles Specify quantity

- _____ 5-15R
- _____ C13
- _____ C19
- _____ L6-30R

Color Choose one

- Carbon (black)
- Red
- White
- Blue

Whip Length Specify length

_____ Specify in 1' increments

CordLok

- Yes
- No

Input Plug Choose one

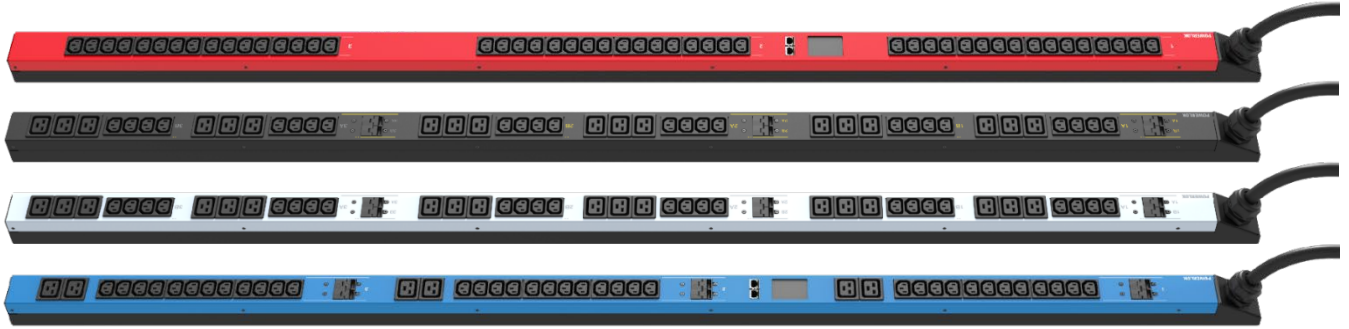
- NEMA L6-20P
- NEMA L6-30P
- NEMA L15-30P
- NEMA L21-20P
- NEMA L21-30P
- CS8365
- IEC 309 (IP44)
- IEC 309 (IP67)

Unit Length Choose one

- 24"
- 36"
- 41"
- 46"
- 72"
- 82"
- 92"

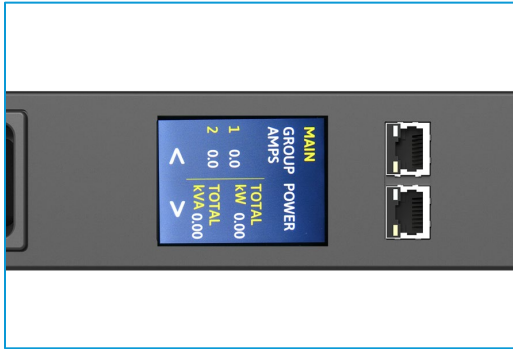
Note: if 50 or 60 amp is selected, unit length must be 41" or larger

Notes:



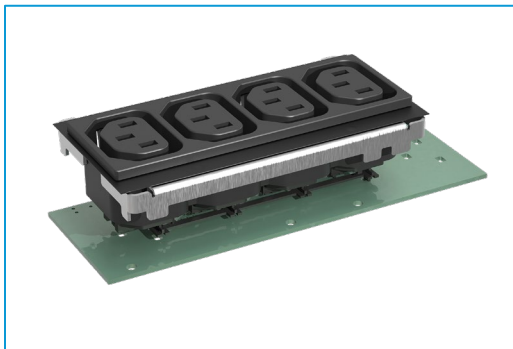
SMART ENGINEERING

- › Modular construction with best outlet density
- › Angled whip
- › Compact design, 2.18"W x 2"D chassis for all amps—50/60 amps units from other manufacturers are typically have a larger chassis
- › Optional CordLOK



ADVANCED MONITORING

- › Touchscreen interface
- › Embedded webserver for remote access
- › SNMP communication
- › Internal temp. reporting
- › Daisy chain together



RELIABILITY

- › Terminations from line input to receptacle are robotically soldered and crimped
- › No rats nest wiring!
- › Independently tested: 3x less likely to fail